

sanilock®

TOILET PARTITIONS



Sanilock Catalog

¡SANILOCK...
the solution in toilet partitions!

SANILOCK® OFFERS:

Mounting Styles

4200 Standard
4300 Standard Reinforced
5200 Standard Shower
5300 Standard Reinforced Shower

Materials

30 Stainless Steel
70 Antigrafitti

Parts

1 Lateral Panel
2 Wall Pilaster
3 Central Pilaster
4 Terminal Pilaster
5 Door
6 Urinal Panel
7 Short Pilaster

MATERIALS



30 Stainless Steel



70 Antigrafitti

ANTIGRAFFITI COLORS

Due to variance among color monitors, the colors that appear on your screen may not be exact.



5751 - 6 White White



5752 - 1 Sand



5754 - 4 Brown



5751 - 7 Old White



5754 - 0 Light Brown



5752 - 6 Black



5752 - 3 Natural Grey

MOUNTING STYLES



4200 STANDARD

SANILOCK®'s 4200 standard mounting style characteristics are high strength and excellent presentation, with the floor attachment system that distinguished us.

Made to be fixed at floors and walls, with a height of 1.80 meters.



4300 STANDARD REINFORCED

It's designed to support a more rugged use. It has all the features of the standard mounting style and additionally a top brace lined stainless steel which are used to fixed the pilasters, provides the necessary strength. It can be used in alcove partitions.



5200 STANDARD SHOWER/ 5300 STANDARD REINFORCED SHOWER

Material and construction are moisture resistant.

They can be reinforced for heavier use. Panel and doors with a larger size are installed 11 or 13 cm from the floor.





ALCOVE

SANILOCK® has inclusive solutions for people with disabilities by providing alcoves partitions. Offers a variety of solutions such as partitions and accessories for people with disabilities.



ANTI GRAFITI PARTITIONS

Antigrafiti enamel finish, on 24 gauge steel sheets, is chemical resistant, pen, permanent ink markers and spray paint. It is made in white, old white, light gray, sand, light chocolate and brown.

STAINLESS STEEL

Type 304 3PVC 22 Gauge scratched polished finish.

SANILOCK®'s HARDWARE

WARRANTED FOR LIFE

SANILOCK®'s original hardware manufacture in its plant are long lasting for its construction 304 stainless steel heavy gauge, polished electrolytically are ensuring and unique finish. All parts forming a partition: doors, panels and pilasters have a thin stainless steel perimeter molding, providing them beauty, durability and elegance.

Slide Latch



Pull Tab



Coat Hook



Bumper Out Swing



Torx Security Round Head Screws



Handicaped Coat Hook



Adjustment Brackets



"U" Bracket



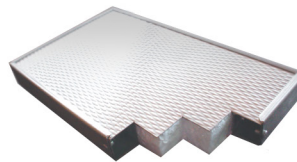
Urinal Bracket



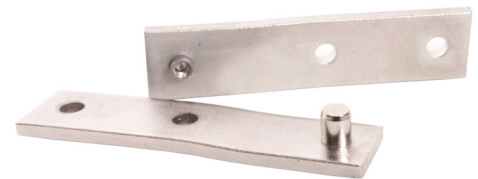
Bush



Construction Details



Lower Hinge



Sanilock's Pilaster Cover



Fixing Details



Top Hinge



SANILOCK®'s strength of the fixing system, leveling and adjustment of easy installation secure the pilasters to the floor or ceiling, providing security and stiffness in their operation. All parts are constructed of galvanized tubular structure made of a single piece perimeter, ensuring its durability.

SPECIFICATIONS

1.0 GENERAL

SANILOCK®'s metallic partitions are manufactured in series under international standards, with skilled labor work and materials of the highest quality.

2.0 EXTERIOR AND INTERIOR MATERIALS

2.1 EXTERIOR

Laminated bonderized galvanized sheet gauge 22 ASTM A-653 enamel applied with powder electrostatically and baked. Stainless steel and Inoxlock (textured steel) gauge 22 type 304-3PVC ASTM A-240.

2.2 INTERIOR

Galvanized square 1"x1", gauge 20. Note: for plastic laminated finish PTG is used, both with 18 gauge expanded polystyrene with a density of 14 kg/m³. (M.D.F. only in plastic laminate).

3.0 CONSTRUCTION

3.1 LATERAL PANELS, DOORS, URINAL PANELS

Manufactured with perimetrical monolithic structure (one-piece) and internal reinforcements (including holders for rails) galvanized square pipe 1" x 1" welded (MIG) and joints protected with anti-corrosion. In the inside is located a expanded polystyrene plate of 14 kg/m³. Special glue is applied to the inside faces of the sheets chosen by the type of finish, sheets are placed in the structure and ironed to ensure contact.

3.2 PILASTERS

Have the same characteristics of construction as panels and doors. Additionally pilasters are integrated with the fixing system to the floor or root, 12 gauge galvanized sheet, includes cover pilaster base type 304 stainless steel 22 gauge to conceal and protect the fixing system. The pillar fixing systems wrapped and protected with a 304 stainless steel cover, finish 3, made in one piece deeply cleaned and protected with nanotechnology with a non-stick coating that does not allow liquids to come into contact with the stainless steel, making cleaning as easy as possible.

4.0 MOUNTING STYLES

Partitions can be installed between walls, without walls or wall corner.

4200 STANDARD.- It's manufactured to be fixed to the floor or walls.

4300 STANDARD REINFORCED.- Designed to withstand continuous mistreatment, fixing the floor and the upper reinforcement (lined stainless steel).

5200 STANDARD SHOWER.- Material and construction are moisture resistant. Panel and doors with a larger size are installed 11 or 13 cm from the floor.

5300 STANDARD REINFORCED SHOWER- Material and construction are moisture resistant. Reinforced for heavier use.

5.0 MATERIALS

SANILOCK® has different materials. Finishes 30 and 70 have stainless steel perimeter including 24 gauge type 304 3PVC.

30 STAINLESS STEEL Type 304 3PVC 22 Gauge scratched polished finish.

70 ANTIGRAFFITI ENAMEL Covers are laminated steel enamel antigraffiti 24 gauge, designed to make a quick stain removal, such as pen, permanent marker, and spray paint with chemical resistance and high hardness. In this finish SANILOCK® offers a wide range of colors (see table page 1).

6.0 HARDWARE

To ensure durability, reliability and beauty, SANILOCK® stands out with a complete line of fittings made of stainless steel type 304 with bright mirror finish. Hinges are 3/16" gauge and 12 gauge for everything else (doorknob, pull tab, brackets and hooks) are packed in kits for each door (door, panel and pilaster), including a list of contents.

7.0 SCREWS

Each part includes all screws in stainless steel or galvanized, necessary for the installation of its hardware, including expanders and galvanized studs. Delivered in kits which correspond to each order with its hardware.

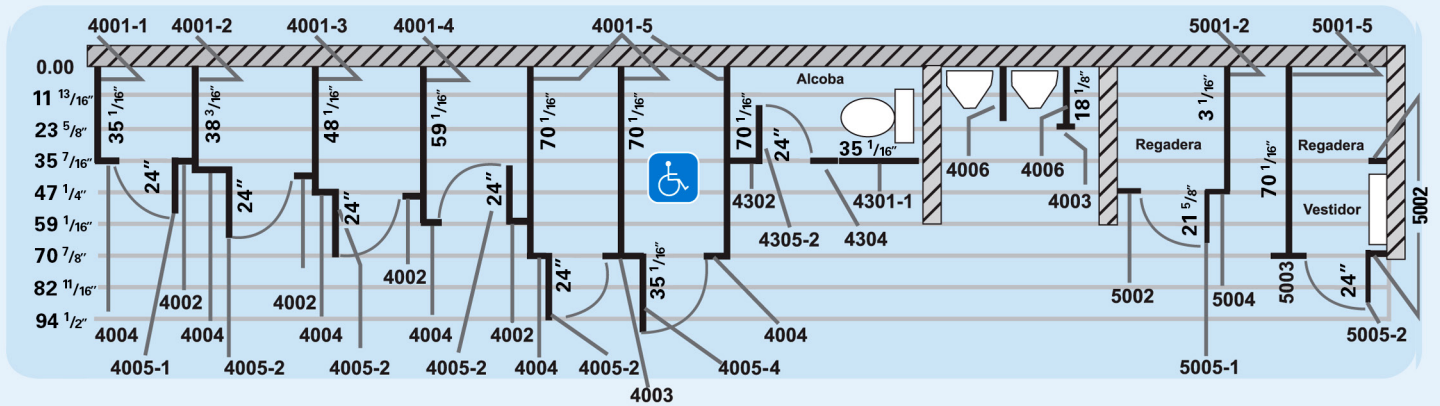
8.0 INSTALLATION

In the delivery of the equipment, SANILOCK® includes hardware, screws and manual needed for the installation.

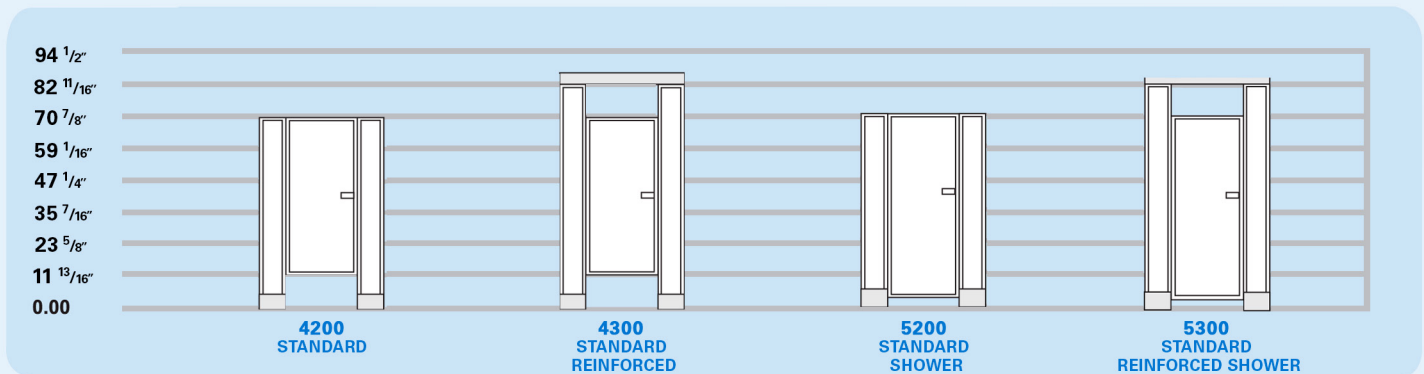
9.0 WARRANTY

SANILOCK® warrants to the original purchaser, that its products: partitions and accessories are free from defects in materials and workmanship in normal use and service, for one year from the date of billing. Hardware are warranted for life under normal use.

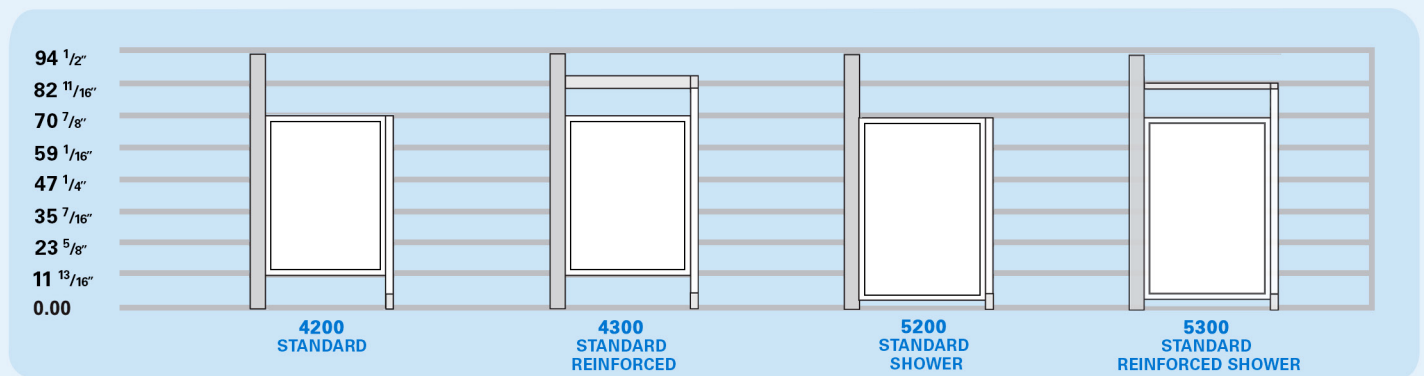
PLANT



FRONT ELEVATION



SIDE ELEVATION



MEASURES PARTS

			4200 STANDARD	4300 STANDARD REINFORCED	5200 STANDARD SHOWER	5300 STANDARD REINFORCED SHOWER
PANELS	LATERAL	4001-1	0.90 X 1.50	0.90 X 1.50	0.90 X 1.69	0.90 X 1.69
		4001-2	0.97 X 1.50	0.97 X 1.50	0.97 X 1.69	0.97 X 1.69
		4001-3	1.22 X 1.50	1.22 X 1.50	1.22 X 1.69	1.22 X 1.69
		4001-4	1.50 X 1.50	1.50 X 1.50	1.50 X 1.69	1.50 X 1.69
		4001-5	1.78 X 1.50	1.78 X 1.50	1.78 X 1.69	1.78 X 1.69
		4001-6	1.35 X 1.50	1.35 X 1.50	1.35 X 1.69	1.35 X 1.69
		4001-7	0.55 X 1.50	0.55 X 1.50	0.55 X 1.69	0.55 X 1.69
		4001-8	0.61 X 1.50	0.61 X 1.50	0.61 X 1.69	0.61 X 1.69
		4001-9	0.85 X 1.50	0.85 X 1.50	0.85 X 1.69	0.85 X 1.69
	URINAL PANEL	4006-0	0.46 X 1.20	0.46 X 1.20	----	----
PILASTERS	WALL	4002-0	0.60 X 1.80	0.60 X 2.10	0.60 X 1.80	0.60 X 2.10
		4002-1	0.12 X 1.80	0.12 X 2.10	0.12 X 1.80	0.12 X 2.10
		4002-2	0.15 X 1.80	0.15 X 2.10	0.15 X 1.80	0.15 X 2.10
		4002-3	0.17 X 1.80	0.17 X 2.10	0.17 X 1.80	0.17 X 2.10
		4002-4	0.20 X 1.80	0.20 X 2.10	0.20 X 1.80	0.20 X 2.10
		4002-5	0.24 X 1.80	0.24 X 2.10	0.24 X 1.80	0.24 X 2.10
		4002-6	0.30 X 1.80	0.30 X 2.10	0.30 X 1.80	0.30 X 2.10
		4002-7	0.34 X 1.80	0.34 X 2.10	0.34 X 1.80	0.34 X 2.10
		4002-8	0.40 X 1.80	0.40 X 2.10	0.40 X 1.80	0.40 X 2.10
		4002-9	0.50 X 1.80	0.50 X 2.10	0.50 X 1.80	0.50 X 2.10
	CENTRAL	4003-0	0.60 X 1.80	0.60 X 2.10	0.60 X 1.80	0.60 X 2.10
		4003-1	----	0.12 X 2.10	----	0.12 X 2.10
		4003-2	----	0.15 X 2.10	----	0.15 X 2.10
		4003-3	----	0.17 X 2.10	----	0.17 X 2.10
		4003-4	0.20 X 1.80	0.20 X 2.10	0.20 X 1.80	0.20 X 2.10
		4003-5	0.24 X 1.80	0.24 X 2.10	0.24 X 1.80	0.24 X 2.10
		4003-6	0.30 X 1.80	0.30 X 2.10	0.30 X 1.80	0.30 X 2.10
		4003-7	0.34 X 1.80	0.34 X 2.10	0.34 X 1.80	0.34 X 2.10
		4003-8	0.40 X 1.80	0.40 X 2.10	0.40 X 1.80	0.40 X 2.10
		4003-9	0.50 X 1.80	0.50 X 2.10	0.50 X 1.80	0.50 X 2.10
	TERMINAL	4004-0	0.60 X 1.80	0.60 X 2.10	0.60 X 1.80	0.60 X 2.10
		4004-1	----	0.12 X 2.10	----	0.12 X 2.10
		4004-2	----	0.15 X 2.10	----	0.15 X 2.10
		4004-3	----	0.17 X 2.10	----	0.17 X 2.10
		4004-4	0.20 X 1.80	0.20 X 2.10	0.20 X 1.80	0.20 X 2.10
		4004-5	0.24 X 1.80	0.24 X 2.10	0.24 X 1.80	0.24 X 2.10
		4004-6	0.30 X 1.80	0.30 X 2.10	0.30 X 1.80	0.30 X 2.10
		4004-7	0.34 X 1.80	0.34 X 2.10	0.34 X 1.80	0.34 X 2.10
		4004-8	0.40 X 1.80	0.40 X 2.10	0.40 X 1.80	0.40 X 2.10
		4004-9	0.50 X 1.80	0.50 X 2.10	0.50 X 1.80	0.50 X 2.10
	SHORT	4007-0	0.60 X 1.50			
		4007-1	0.12 X 1.50			
		4007-2	0.15 X 1.50			
		4007-3	0.17 X 1.50			
		4007-4	0.20 X 1.50			
		4007-5	0.24 X 1.50			
		4007-6	0.30 X 1.50			
		4007-7	0.34 X 1.50			
		4007-8	0.40 X 1.50			
		4007-9	0.50 X 1.50			
DOORS		4005-1	0.55 X 1.50	0.55 X 1.50	0.55 X 1.69	0.55 X 1.69
		4005-2	0.61 X 1.50	0.61 X 1.50	0.61 X 1.69	0.61 X 1.69
		4005-3	0.90 X 1.50	0.90 X 1.50	0.90 X 1.69	0.90 X 1.69
		4005-4	1.00 X 1.50	1.00 X 1.50	1.00 X 1.69	1.00 X 1.69

sanilock®

TOILET PARTITIONS



Sanilock.com



www.antigrafitipartitions.com

partitions@sanilock.com

We are organized
to serve by phone and internet
(011 + 52) 81 - 8228 - 8300



www.sanilock.com/app



Call us with no charge from your computer
through our site sanilock.com/contacto



saniPhone



youtube.com/sanilock



facebook

[sanilock](https://www.facebook.com/sanilock)



Pinterest

[sanilock](https://www.pinterest.com/sanilock)



Instagram

[sanilock](https://www.instagram.com/sanilock)



[flickr.com/sanilock](https://www.flickr.com/photos/sanilock)



[@sanilock](https://twitter.com/sanilock)

S04-CAT. SANILOCK-v03

Monterrey, N.L.: 011 + 52 + (81) 8228 - 8300
Fax: 011 + 52 + (81) 8228 - 8328



WhatsApp
81 - 2108 - 7865

www.antigrafitipartitions.com
partitions@sanilock.com

Call us!